

Processing

Broadcom BCM2711 quad-core Cortex-A72 (ARM v8) 64-bit SoC @ 1.5GHz

OpenGL ES 3.1, Vulkan 1.0

Options for 1GB, 2GB, 4GB or 8GB LPDDR4-3200 SDRAM

Options for 8GB, 16GB or 32GB eMMC Flash memory

2.4 GHz, 5.0 GHz IEEE 802.11 b/g/n/ac wireless;
Bluetooth 5.0, BLE;



Display

7 inch IPS Capacitive touch panel

I/O Availability

8 x Digital Inputs

8 x Analog Inputs 0-10V / 4-20mA

7 x Transistor outputs

1 x RS-485

Ports & Connections

1 x Gigabit Ethernet

2 x USB Type A Ports

1 x USB Type C

1 x M.2 SSD Port - Internal

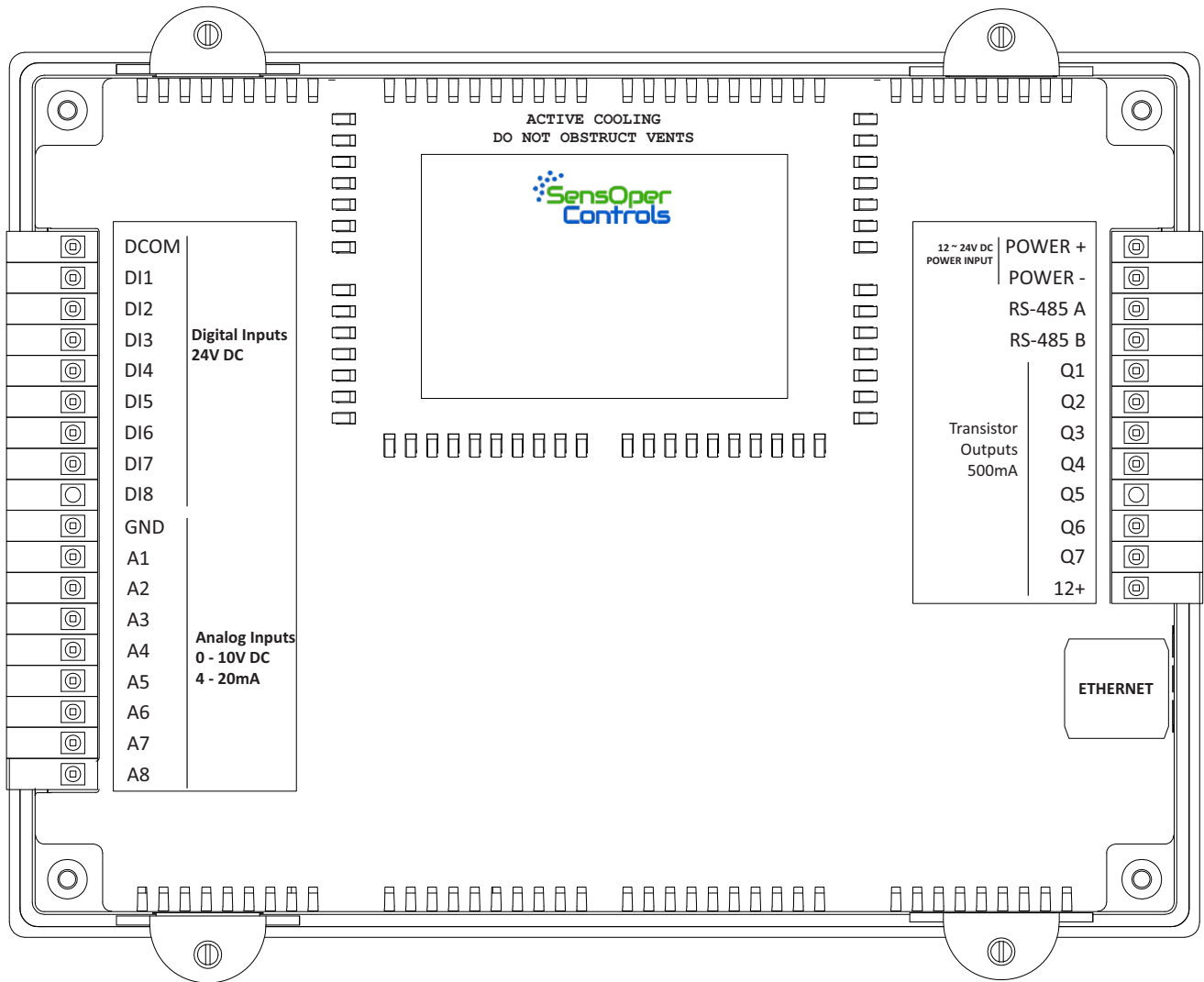
1 x microSD

Main

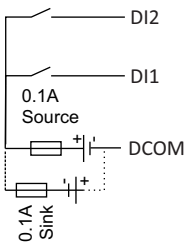
Range of product	Panel Computer
Product type	Programmable Panel Controller
Rated supply voltage	24V DC
Discrete input number	8 discrete input
Discrete output type	Transistor
Discrete output number	7 Transistor outputs
Discrete output current	0.5A with T0.0... T0.1 Transistor
Communication	1 x RS-485 1 x Gigabit Ethernet

Complementary

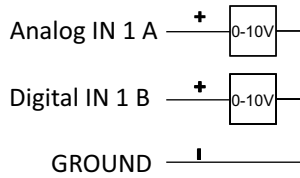
Discrete IO number	23
Number of Expansions	-----
Supply voltage limits	20.4....28.8V
Inrush current	<=50A
Power consumption in W	32.6.....40.4 with all outputs ON
Discrete logic input	Sink or source
Discrete input voltage	24V
Discrete input voltage type	DC
Voltage state 1 guaranteed	>=15 V for input
Voltage state 0 guaranteed	<=5 V for input
Discrete input current	5 mA for input
Input impedance	4.7k Ohm for input
Memory capacity	Depend on Model
Battery type	RTC CR1220
Backup time	1 - 2 years
Local signalling	1 LED green for PWR 8 LED green for I0.....I7 2 LED green for T0....T1
Electrical connection	Removable screw terminal block for inputs and outputs (pitch 5.08 mm)
Mounting support	Top hat type TH35-15 rail conforming to IEC 60715 Top hat type TH35-7.5 rail conforming to IEC 60715 Plate or panel with fixing kit
Height	90.50 mm
Depth	56.60 mm
Width	60.60 mm
Product weight	0.84 Kg



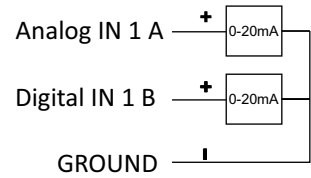
Digital Inputs Wiring



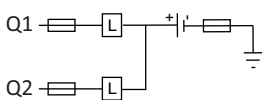
Analog Input 0 - 10V



Analog Input 0 - 20mA



Transistor output wiring





Reach-Us

Technical Support

E-mail : support@sensoper.com

Sales Inquiries

E-mail : sales@sensoper.com

Web : <https://www.sensoper.com/support/>

Order Online

<https://www.sensoper.com>